

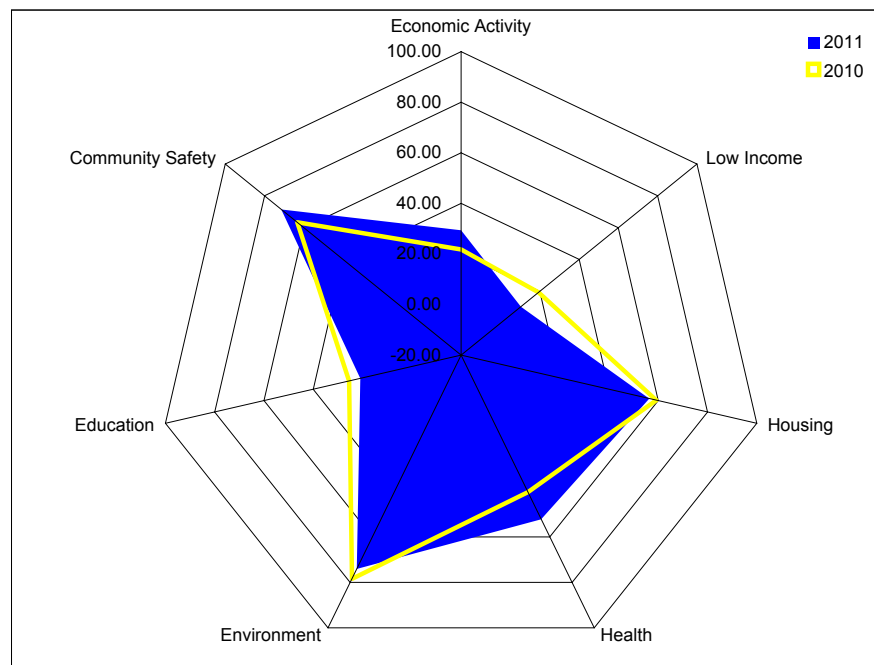
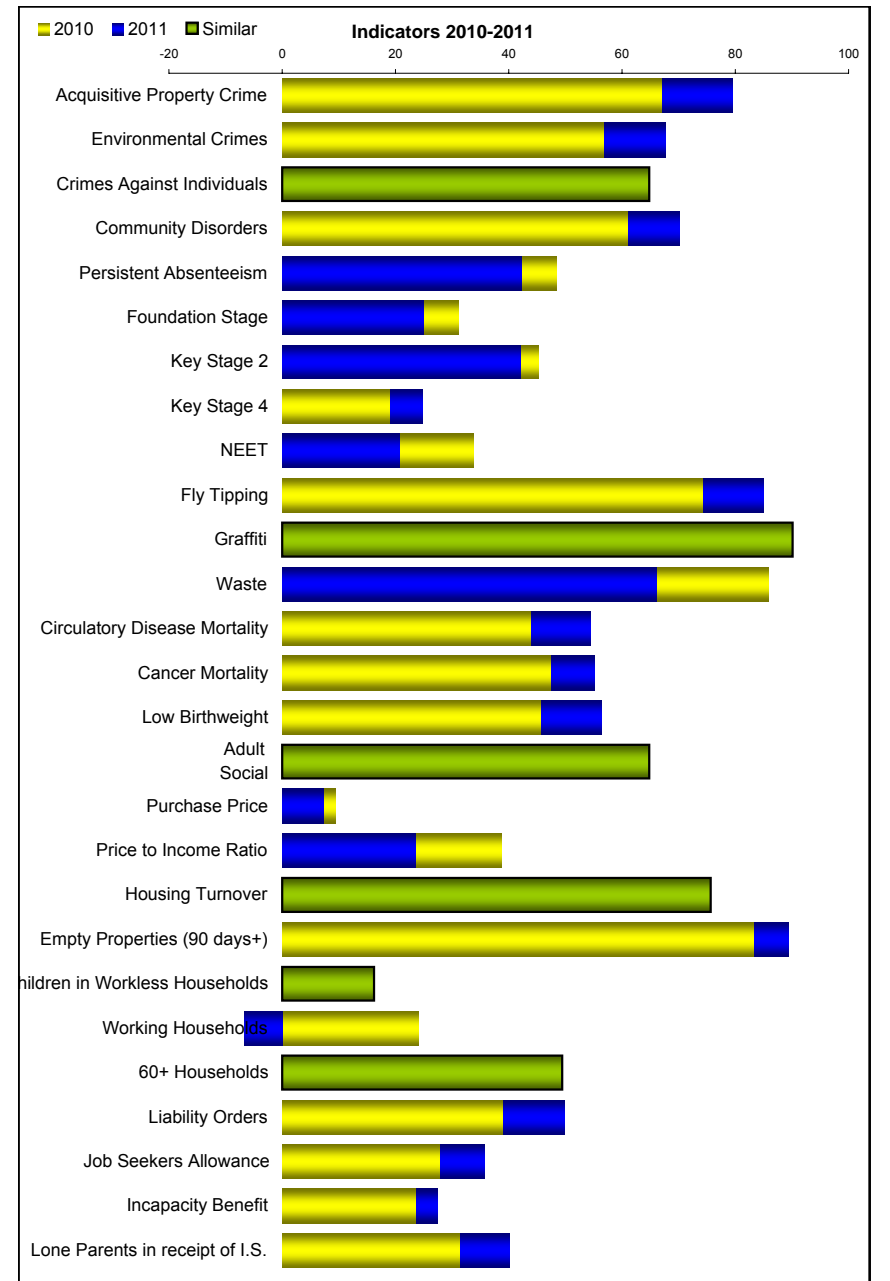
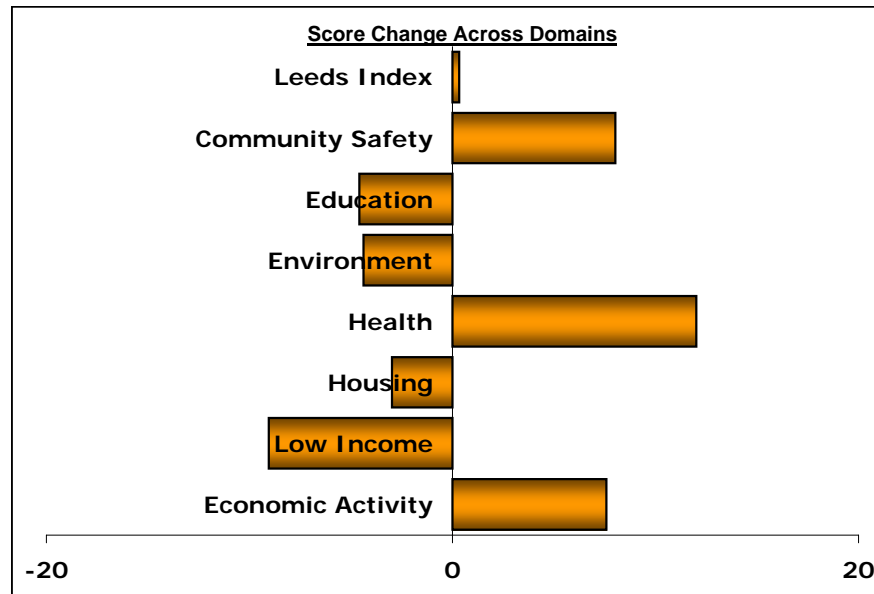


# Leeds Neighbourhood Index

Domain Summary	2010		2011		Change	
	Rank	Score	Rank	Score	Rank	Score
Economic Activity	13	21.77	13	29.34	0	7.58
Low Income	13	19.49	11	10.44	-2	-9.05
Housing	42	59.28	32	56.30	-10	-2.97
Health	27	40.25	38	52.27	11	12.02
Environment	23	78.49	25	74.10	2	-4.39
Education	22	25.41	12	20.83	-10	-4.58
Community Safety	19	63.44	29	71.46	10	8.02
Leeds Index	20	20.54	19	20.88	-1	0.34

Indicators	2010		2011		Change	
	Data	Score	Data	Score	Data	Score
Job Seekers' Allowance	8.83%	27.72	7.98%	35.72	-0.85	8.00
Incapacity Benefit	10.71%	23.55	10.23%	27.35	-0.48	3.79
Lone Parent Income Support	5.23%	31.24	4.56%	40.05	-0.67	8.80
Children in Workless Households	642	16.21	642	16.21	0	0.00
Households Receiving In-Work Benefits	217	23.99	300	-6.64	83	-30.63
60+ Households In Receipt of Benefits	333	49.45	336	48.90	3	-0.55
Court Payment Orders	358	38.93	301	49.81	-57	10.88
Average Purchase Price	£111,998	9.41	£104,353	7.25	-£7,645	-2.15
Price / Income Ratio	5.79	38.66	4.77	23.43	-1.02	-15.22
Housing Turnover	13.52%	74.06	12.95%	75.63	-0.57	1.56
Empty Homes (90+ days)	5.42%	83.24	4.32%	89.24	-1.11	6.00
Circulatory Disease Mortality	132.41	43.72	111.36	54.29	-21.05	10.58
Cancer Mortality	141.13	47.28	127.37	55.06	-13.76	7.77
Low Birthweight	8.60	45.54	7.48	56.40	-1.1	10.85
Adult Social Care	104	64.80	105	64.25	1	-0.56
Fly Tipping	120	74.22	73	84.85	-47	10.63
Graffiti	13	90.09	13	90.09	0	0.00
Waste Issues	48	85.77	112	65.97	64	-19.80
Persistent Absenteeism	10.70%	48.40	11.92%	42.16	1.22	-6.24
Foundation Stage	32.77%	31.05	28.21%	24.83	-4.56	-6.22
Key Stage 2	63.27%	45.17	61.46%	41.97	-1.81	-3.20
Key Stage 4	27.88%	18.82	32.00%	24.68	4.12	5.86
NEET	10.99%	33.64	13.10%	20.66	2.11	-12.98
Acquisitive Property Crime	534	66.93	365	79.49	-169	12.56
Environmental Crimes	222	56.58	170	67.65	-52	11.07
Crimes Against Individuals	324	64.80	334	63.60	10	-1.20
Community Disorders	743	60.94	597	70.04	-146	9.10

## E02002376: Gipton North



**Notes:**

**Domain Summary:** Shows the rank, score and changes for each domain, for each year.

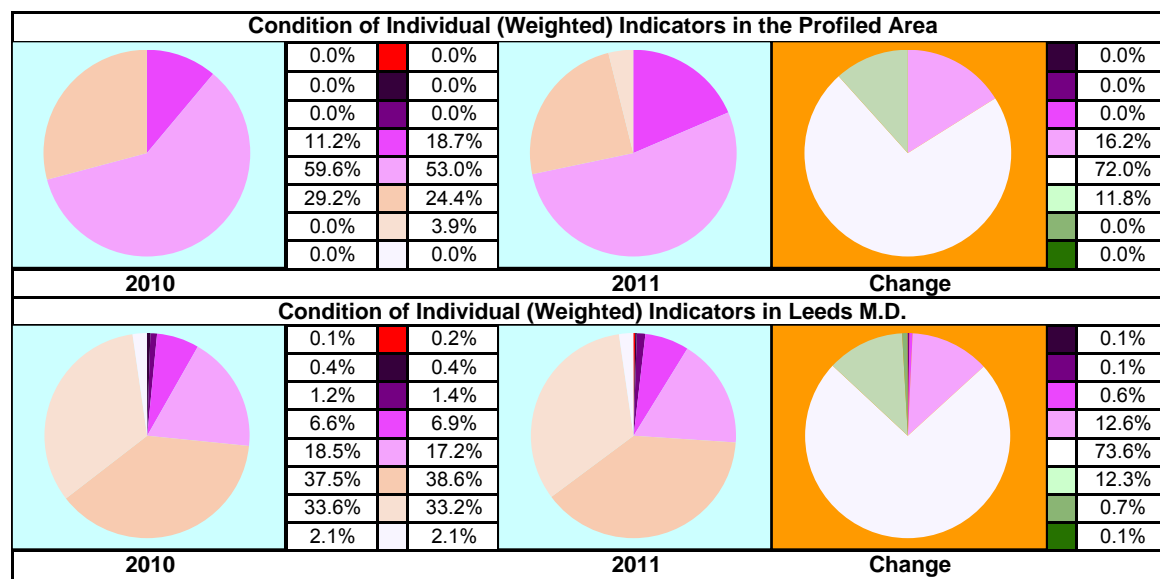
**Indicators:** Shows the score, underlying data and changes for each indicator, for each year.

**Bar Chart (Score Change Across Domains):** A graphical representation of the change in the domain scores between this year and last. N.B. an increase in score indicates improvement, a decrease in score indicates deterioration.

**Bar Chart (Indicators 2010-2011):** A graphical representation comparing the indicator scores for each year. N.B. indicators showing minimal change are represented by green bars.

**Spidergram:** A graphical representation comparing the domain scores for each year.

**Pie Charts:** Graphical representations of the weighted proportions of individual indicators falling into each band.



**Colour Keys for Pie Charts and Tables**

Indicator and Domain Index Scores	Indicator and Domain Score Changes
Least Successful	Most Deteriorated
Below Average	Below Average
Average	Static
Above Average	Above Average
Most Successful	Most Improved

Data cells and pie diagrams are coloured to highlight levels of significance as used elsewhere in the index (from the City average in the case of scores or "No Change" i.e. Zero, in the case of score changes).

Whilst the concept of "significance" highlights statistically important values within a dataset it must be noted that the bands are unique to each indicator and domain for each year, or period of comparison in the case of "change".